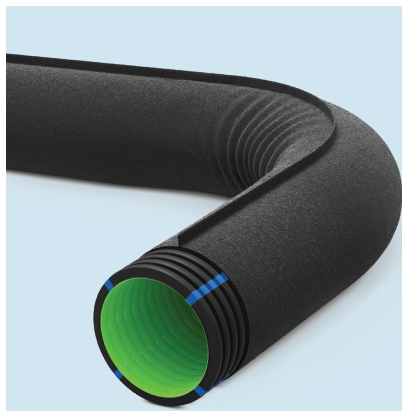


Product Data Sheet

Date of issue 24.08.2022



Manufacturer name and address

EMM. KOUVIDIS S.A
 Manufacturer of plastic conduit systems
 71500, VIOPA Tylissos, Heraklion, Crete
 GREECE

Product Type

Pliable, perforated, structured wall HDPE pipe, corrugated outside and smooth inside, with built-in geotextile and blue color marking, for underground drainage

Product Name

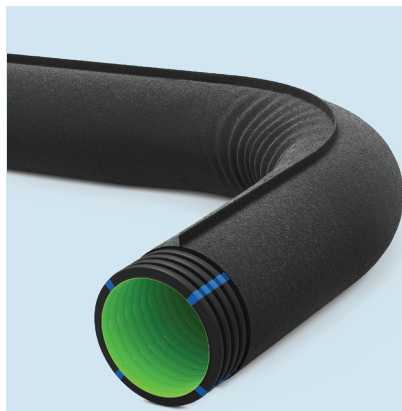
GEODRAIN PLUS
 Drainage pipe

Product Properties

Product category	R2 (DIN 4262-1)
Material	High density polyethylene (HDPE)
Color	RAL 9004 Black (Outer layer) RAL 6038 Green (Inner layer)
Color Marking	4 blue longitudinal lines for water identification
Nominal outside diameters (DN/OD)	50m coils: OD63, OD90, OD110, OD125 25m coils: OD160, OD200
Degrees of perforation	360° - TP (Totally perforated, DIN 4262-1)
Perforation area	OD63 - OD125: >50cm ² /m, OD160: >120cm ² /m, OD200: >90cm ² /m
Perforation slot number	6 symmetrically distributed holes per 60 °
Nominal diameters (OD)	63 90 110 125 160 200
Perforation length (mm)	11 13 17 18 19 22
Perforation width (mm)	1,5 1,5 1,5 1,5 1,6 1,6
Perforation number per meter	312 287 255 223 403 268
Perforation area (cm²/m²)	≥50 ≥50 ≥50 ≥50 ≥100 ≥90
European Directive	2011/65/EE (RoHS)
Reference standards	EN ISO 9969, DIN 4262-1, NF-P 98-332
Ring stiffness	SN 4 KN/m ² (EN ISO 9969)
Ageing	UV resistance (5 years)
Packaging	Coils 25m (Ø): 160, 200 Coils 50m (Ø): 63, 90, 110, 125
Part Number	2028XXX (SN4) where XXX: 063, 090, 110, 125, 160, 200

Product Data Sheet

Date of issue 24.08.2022



Manufacturer name and address

EMM. KOUVIDIS S.A
Manufacturer of plastic conduit systems
71500, VIOPA Tylissos, Heraklion, Crete
GREECE

Product Type

Pliable, perforated, structured wall HDPE pipe, corrugated outside and smooth inside, with built-in geotextile and blue color marking, for underground drainage

Product Name

GEODRAIN PLUS
Drainage pipe

Geotextile Characteristics

Declaration of Performance:

Tensile Strength (MD/CD) EN ISO 10319 (kN/m)	8.0 (-1.0) / 8.0 (-1.0)
Tensile Elongation (MD/CD) EN ISO 10319 (%)	45 (±10) / 45 (±10)
Resistance to Static Puncture (CBR) ISO 12236(N)	2000 (-300)
Dynamic Perforation Resistance (ISO 13433)(mm)	28 (+7)
Characteristic Opening Size (ISO 12956)(mm))	90 (±27)
Water Flow rate (ISO 11058(l/m ² /s))	110 (-33)